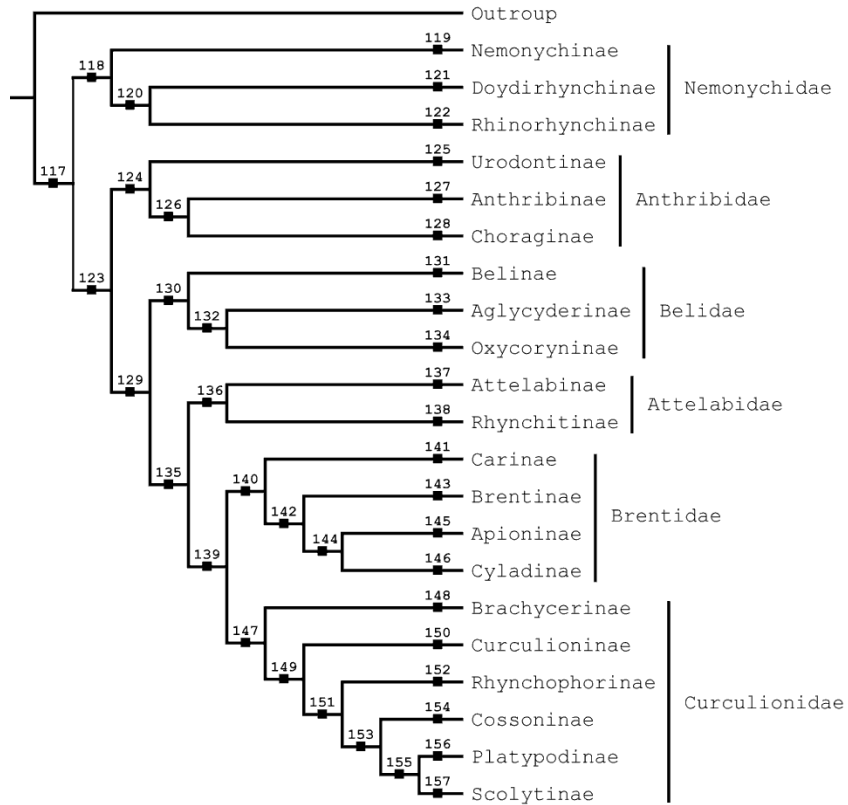


ID	NameSimple	AccordingToSimple	Rank
117	Curculionoidea	Kuschel 1995	Superfamily
118	Nemonychidae	Kuschel 1995	Family
119	Nemonychinae	Kuschel 1995	Subfamily
120	Doydirhynchinae-Rhinorhynchinae	Kuschel 1995	Clade
121	Doydirhynchinae	Kuschel 1995	Subfamily
122	Rhinorhynchinae	Kuschel 1995	Subfamily
123	Anthribidae-Curculionidae	Kuschel 1995	Clade
124	Anthribidae	Kuschel 1995	Family
125	Urodontinae	Kuschel 1995	Subfamily
126	Anthribinae-Choraginae	Kuschel 1995	Clade
127	Anthribinae	Kuschel 1995	Subfamily
128	Choraginae	Kuschel 1995	Subfamily
129	Belidae-Curculionidae	Kuschel 1995	Clade
130	Belidae	Kuschel 1995	Family
131	Belinae	Kuschel 1995	Subfamily
132	Aglycyderinae-Oxycoryninae	Kuschel 1995	Clade
133	Aglycyderinae	Kuschel 1995	Subfamily
134	Oxycoryninae	Kuschel 1995	Subfamily
135	Attelabidae	Kuschel 1995	Family
136	Attelabinae-Rhynchitinae	Kuschel 1995	Clade
137	Attelabinae	Kuschel 1995	Subfamily
138	Rhynchitinae	Kuschel 1995	Subfamily
139	Brentidae-Curculionidae	Kuschel 1995	Clade
140	Brentidae	Kuschel 1995	Family
141	Carinae	Kuschel 1995	Subfamily
142	Brentinae-Cyladinae	Kuschel 1995	Clade
143	Brentinae	Kuschel 1995	Subfamily
144	Apioninae-Cyladinae	Kuschel 1995	Clade
145	Apioninae	Kuschel 1995	Subfamily
146	Cyladinae	Kuschel 1995	Subfamily
147	Curculionidae	Kuschel 1995	Family
148	Brachycerinae	Kuschel 1995	Subfamily
149	Curculioninae-Scolytinae	Kuschel 1995	Clade
150	Curculioninae	Kuschel 1995	Subfamily
151	Rhynchophorinae-Scolytinae	Kuschel 1995	Clade
152	Rhynchophorinae	Kuschel 1995	Subfamily
153	Cossoninae-Scolytinae	Kuschel 1995	Clade
154	Cossoninae	Kuschel 1995	Subfamily
155	Platypodinae-Scolytinae	Kuschel 1995	Clade
156	Platypodinae	Kuschel 1995	Subfamily
157	Scolytinae	Kuschel 1995	Subfamily

ID	NameSimple	AccordingToSimple	Rank
348	Curculionoidea	Marvaldi & Morrone 2000	Superfamily
349	Anthribidae-Nemonychidae	Marvaldi & Morrone 2000	Clade
350	Anthribidae	Marvaldi & Morrone 2000	Family
351	Nemonychidae	Marvaldi & Morrone 2000	Family
352	Belidae-Curculionidae s.l.	Marvaldi & Morrone 2000	Clade
353	Belidae	Marvaldi & Morrone 2000	Family
354	Attelabidae-Curculionidae s.l.	Marvaldi & Morrone 2000	Clade
355	Attelabidae	Marvaldi & Morrone 2000	Family
356	Caridae-Curculionidae s.l.	Marvaldi & Morrone 2000	Clade
357	Caridae	Marvaldi & Morrone 2000	Family
358	Brentidae-Curculionidae s.l.	Marvaldi & Morrone 2000	Clade
359	Brentidae	Marvaldi & Morrone 2000	Family
360	Curculionidae s.l.	Marvaldi & Morrone 2000	Family
361	Ithycerinae	Marvaldi & Morrone 2000	Subfamily
362	Microcerinae-Erirhininae	Marvaldi & Morrone 2000	Clade
363	Microcerinae	Marvaldi & Morrone 2000	Subfamily
364	Brachycerinae-Erirhininae	Marvaldi & Morrone 2000	Clade
365	Brachycerinae	Marvaldi & Morrone 2000	Subfamily
366	Ocladiinae-Erirhininae	Marvaldi & Morrone 2000	Clade
367	Ocladiinae	Marvaldi & Morrone 2000	Subfamily
368	Dryphthorinae-Erirhininae	Marvaldi & Morrone 2000	Clade
369	Dryophthorinae	Marvaldi & Morrone 2000	Subfamily
370	Curculionidae s.s.-Erirhininae	Marvaldi & Morrone 2000	Clade
371	Curculionidae s.s.	Marvaldi & Morrone 2000	Family
372	Erirhininae	Marvaldi & Morrone 2000	Subfamily

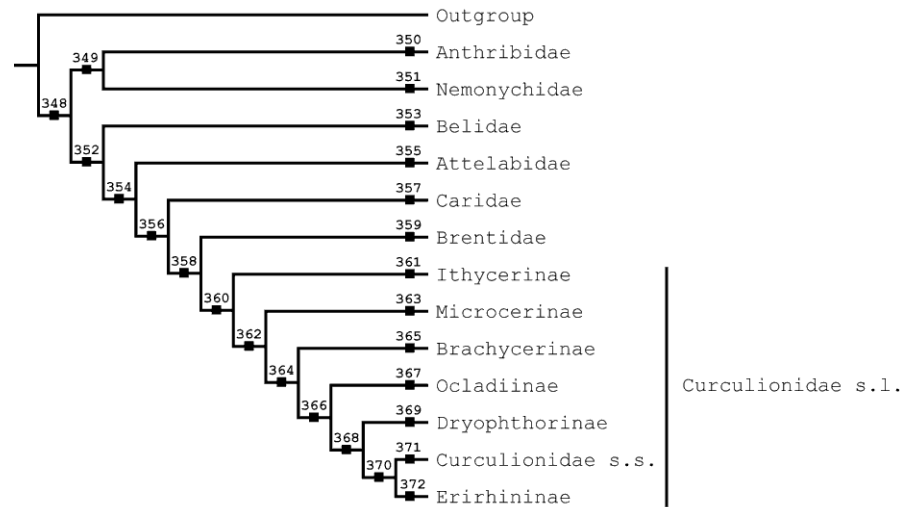
Real-life examples, I – reconciling two weevil classifications ¹

Curculionoidea sec. Kuschel 1995



Concepts **117-157**

Curculionoidea sec. Marvaldi & Morrone 2000



Concepts **348-372**

¹ Initial articulations provided by NMF.

taxonomy m Taxonomy2

(348 349 352)
(349 350 351)
(352 353 354)
(354 355 356)
(356 357 358)
(358 359 360)
(360 361 362)
(362 363 364)
(364 365 366)
(366 367 368)
(368 369 370)
(370 371 372)

taxonomy k Taxonomy1

(117 118 123)
(118 119 120)
(123 124 129)
(120 121 122)
(124 125 126)
(129 130 135)
(126 127 128)
(130 131 132)
(135 136 139)
(132 133 134)
(136 137 138)
(139 140 147)
(140 141 142)
(147 148 149)
(142 143 144)
(149 150 151)
(144 145 146)
(151 152 153)
(153 154 155)
(155 156 157)

articulation km ku95mm00

[m.348 equals k.117]
[m.349 includes k.118]
[m.349 includes k.124]
[m.349 overlaps k.123]
[m.350 equals k.124]
[m.350 includes k.125]
[m.350 includes k.126]
[m.350 includes k.127]
[m.350 includes k.128]
[m.351 equals k.118]
[m.351 includes k.119]
[m.351 includes k.120]
[m.351 includes k.121]
[m.351 includes k.122]
[m.352 is_included_in k.123]
[m.352 equals k.129]
[m.353 equals k.130]
[m.353 includes k.131]
[m.353 includes k.132]
[m.353 includes k.133]
[m.353 includes k.134]
[m.354 equals k.135]
[m.355 equals k.136]
[m.355 includes k.137]
[m.355 includes k.138]
[m.356 equals k.139]
[m.357 is_included_in k.140]
[m.357 equals k.141]
[m.358 is_included_in k.139]
[m.359 is_included_in k.140]
[m.359 equals k.142]
[m.359 includes k.143]
[m.359 includes k.144]
[m.359 includes k.145]

[m.359 includes k.146]
[m.360 equals k.147]
[m.361 is_included_in k.148]
[m.362 is_included_in k.147]
[m.362 overlaps k.148]
[m.362 includes k.149]
[m.363 is_included_in k.148]
[m.364 is_included_in k.147]
[m.364 overlaps k.148]
[m.364 includes k.149]
[m.365 is_included_in k.148]
[m.366 is_included_in k.147]
[m.366 overlaps k.148]
[m.366 includes k.149]
[m.367 is_included_in k.148]
[m.368 is_included_in k.147]
[m.368 overlaps k.148]
[m.368 includes k.149]
[m.368 includes k.151]
[m.369 equals k.152]
[m.370 is_included_in k.147]
[m.370 overlaps k.148]
[m.370 overlaps k.149]
[m.370 includes k.150]
[m.370 overlaps k.151]
[m.370 includes k.153]
[m.371 is_included_in k.147]
[m.371 overlaps k.148]
[m.371 overlaps k.149]
[m.371 overlaps k.150]
[m.371 overlaps k.151]
[m.371 includes k.153]
[m.372 is_included_in k.150]
[m.371 includes k.153]
[m.371 includes k.154]
[m.371 includes k.155]
[m.371 includes k.156]
[m.371 includes k.157]

